

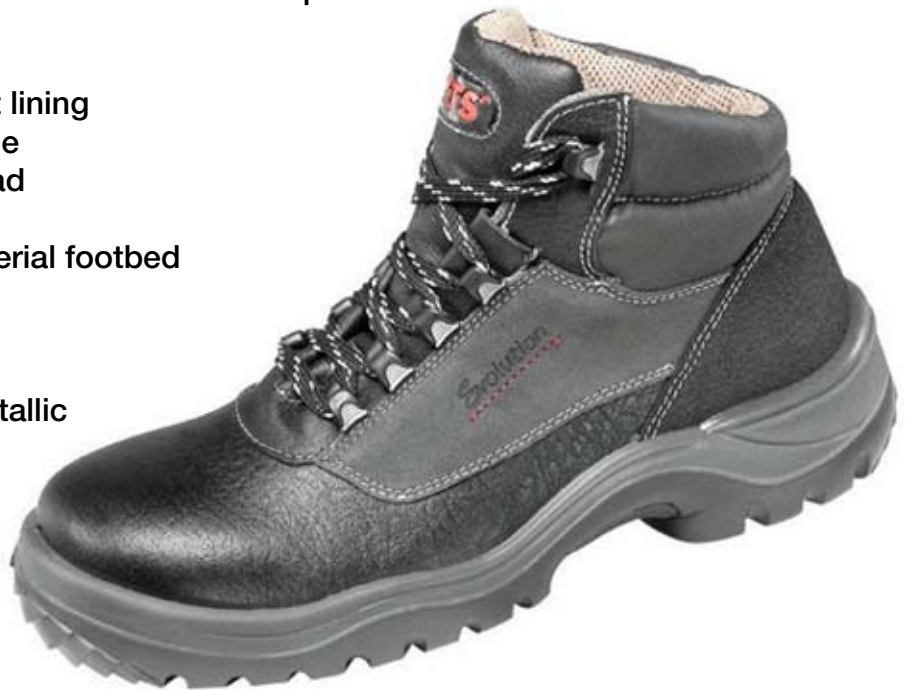


## PRODUCT INFORMATION

### EVOLUTION+ - Safety Footwear has Evolved

#### Features:

- Over 25% lighter than normal steel safety footwear\*
- **Fiberplast®** - Plastic cap with maximum 200 Joules protection
- No metal fittings
- Water-resistant leather uppers
- Breathable, moisture absorbent lining
- Lightweight dual density PU sole
- Deep cleated, slip-resistant tread
- 200° C heat resistant sole
- Full length removable anti-bacterial footbed
- Anti-static
- Size range 3 to 13
- Wide 'comfort' fit
- Available with Kevlar® (non-metallic penetration resistant midsole).



#### Thinsulate™ INSULATION

Thinsulate™ outstanding performance characteristics. It is extremely thin, very lightweight and maintains most of its insulating characteristics even when wet.

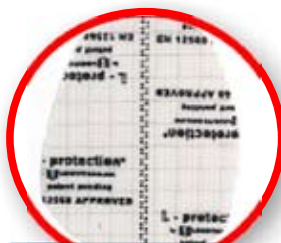
Thinsulate™ Insulation is made up of thousands of tiny microfibers that trap miniscule pockets of insulating air space that provide the ultimate in cold weather protection.

### Latest composite technology over 25% lighter than steel\*



#### Fiberplast® moulded toe cap technology

- non-met
- maximum protection
- ultra-lightweight
- warm in winter
- cool in summer



#### Kevlar® penetration resistant midsole

- non-met
- maximum protection
- ultra-lightweight
- ultra-flexible
- thermal insulated



Rapid Safety Shoes  
Unit M3 Kemble Enterprise Park  
Kemble, Cirencester  
Gloucestershire

GL7 6BQ

\* Based on comparison of equivalent product with steel toecap & midsole